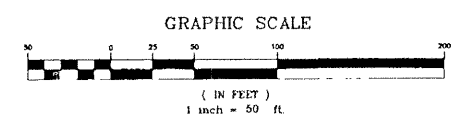
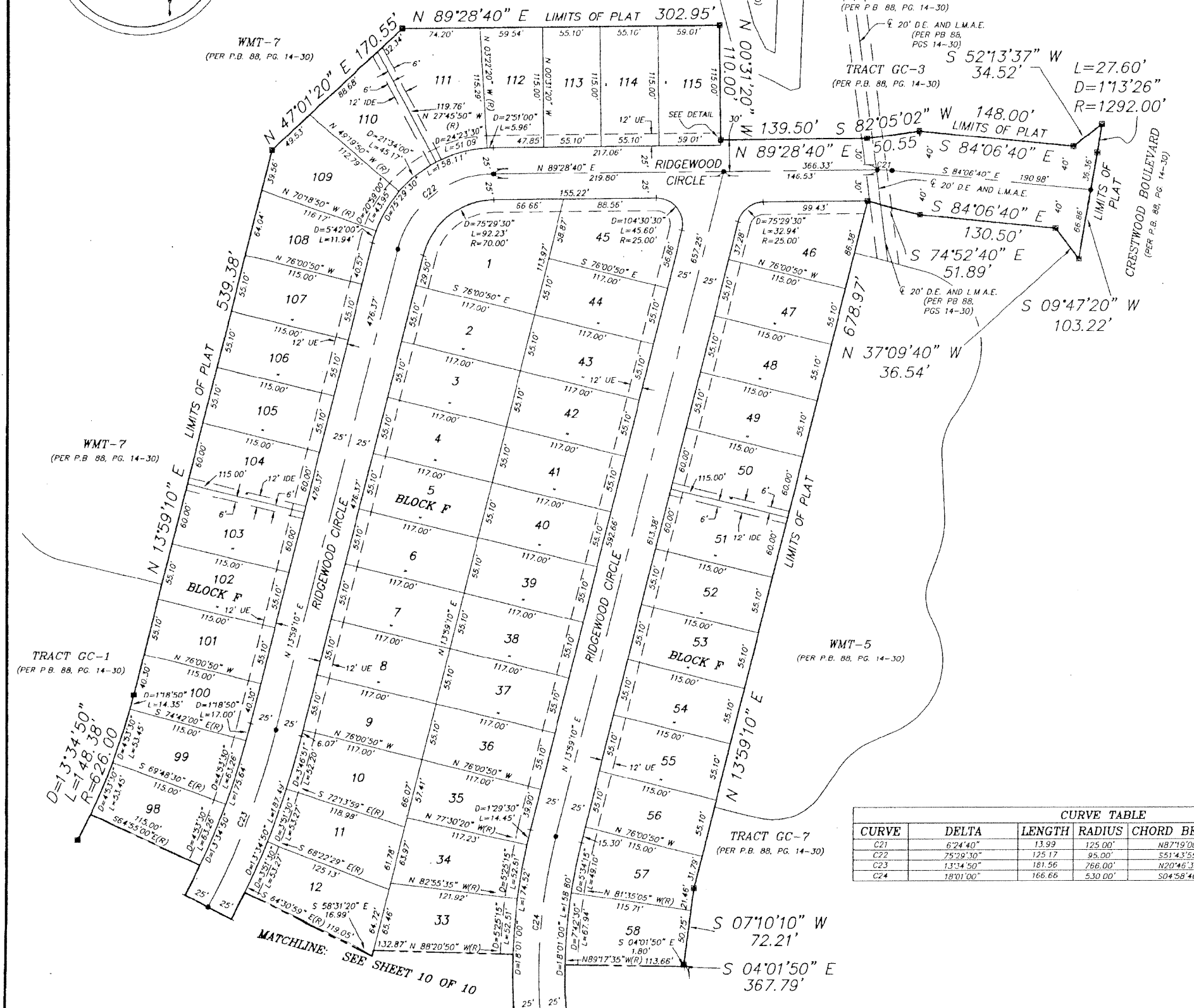
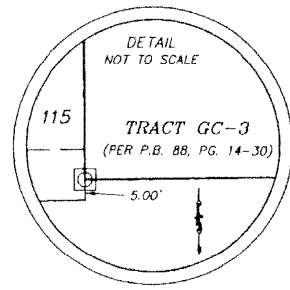


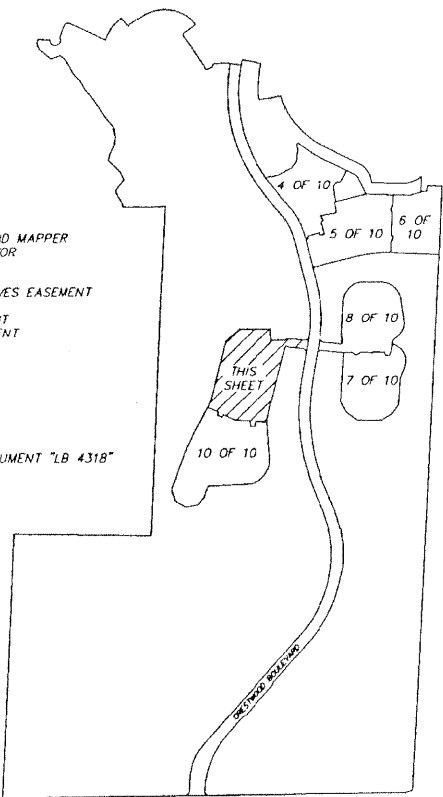
MADISON GREEN-PLAT No. 1, PARCEL "F", PARCEL "G" AND PARCEL "I", REPLAT BEING A REPLAT OF ALL OF PARCEL "F", PARCEL "G" AND PARCEL "I", AS SHOWN ON MADISON GREEN - PLAT No. 1, AS RECORDED IN PLAT BOOK 88, PAGES 14 THROUGH 30 OF THE PUBLIC RECORDS OF PALM BEACH COUNTY FLORIDA. IN SECTIONS 15 AND 22, TOWNSHIP 43 SOUTH, RANGE 41 EAST VILLAGE OF ROYAL PALM BEACH, PALM BEACH COUNTY, FLORIDA
 JULY 2000
 SHEET 9 OF 10



- LEGEND:**
- D= DELTA (CENTRAL ANGLE)
 - L= LENGTH
 - CB= CHORD BEARING
 - CD= CHORD DISTANCE
 - PSM= PROFESSIONAL SURVEYOR AND MAPPER
 - PLS= PROFESSIONAL LAND SURVEYOR
 - LE= LANDSCAPE EASEMENT
 - LAE= LIMITED ACCESS EASEMENT
 - MREE= MAINTENANCE ROOF AND EAVES EASEMENT
 - UE= UTILITY EASEMENT
 - IDE= INTERIOR DRAINAGE EASEMENT
 - CME= CANAL MAINTENANCE EASEMENT
 - DE= DRAINAGE EASEMENT
 - WMT= WATER MANAGEMENT TRACT
 - GC= GOLF COURSE
 - ORB= OFFICIAL RECORD BOOK
 - P.B.= PLAT BOOK
 - PG.= PAGE
 - LB= LICENSED BUSINESS
 - (R)= RADIAL
 - = PERMANENT REFERENCE MONUMENT "LB 4318" (UNLESS OTHERWISE NOTED)
 - = PERMANENT CONTROL POINT

CURVE TABLE

CURVE	DELTA	LENGTH	RADIUS	CHORD BEARING	CHORD DISTANCE
C21	6°24'40"	13.99	125.00'	N87°19'00"W	13.98
C22	75°29'30"	125.17	95.00'	S51°43'55"W	116.31
C23	13°14'50"	181.56	766.00'	N20°46'35"E	181.14
C24	18°01'00"	166.66	530.00'	S04°58'40"W	165.97



SHEET INDEX
NOT TO SCALE

MADISON GREEN-PLAT No.1 PARCEL "F", "G" AND "I", REPLAT

NICK MILLER, INC.
Surveying & Mapping Consultants
SUITE 105
2560 RCA BLVD.
PALM BEACH GARDENS, FLORIDA 33410
TEL 561 627-5200 FAX 561 627-0983
D.D.P. LICENSED BUSINESS NO. 4318

SHEET NO
9

SCALE: 1" = 50'
DATE: FEBRUARY 2001
JOB NO. 99043BU
FILE: 99C43BU.dwg